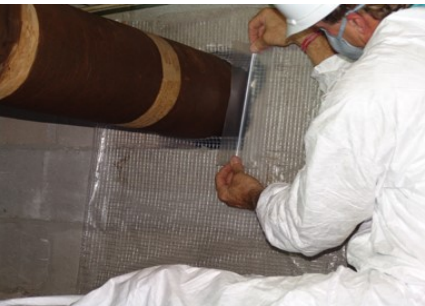
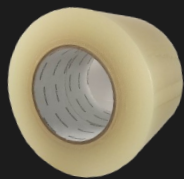


Check Out Our Other Great Crawlspace Products!



HIBATT TAPE

- The strongest 4" double sided tape!
- Securely holds poly to wall- Eliminates the need for dangerous spray adhesive.
- Creates a vapor barrier seal.



Rhino Hide's "Sticky Tape"

***NEW AND IMPROVED 4" CLEAR SPLICING TAPE!**

- Create a seamless seal for protection and visual appeal
- Easy tear serrated edges– NO Finger Slicing Box Cutters!

Need Advice? We Can Help!

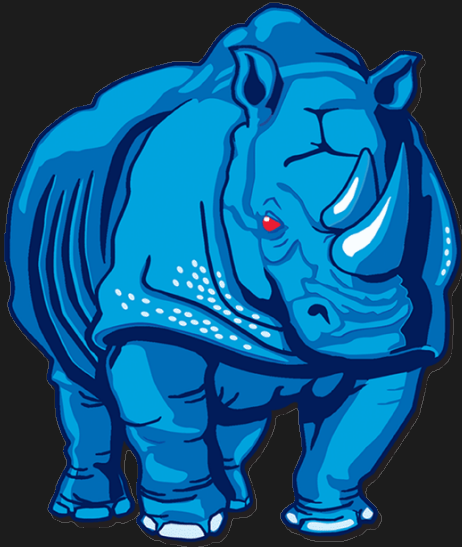
Our team of trained professionals have done their homework so you don't have to. Feel free to call, visit rhinohide.com or email for training and customer support.

863.665.0203 info@rhinohide.com

RHINO HIDE[®]
All-Weather Armor[®]

HomeWood Solutions, LLC · The exclusive provider of Rhino Hide products.

Crawlspace Moisture Control



RHINO HIDE[®]
All-Weather Armor[®]

Established 1954

Prevention is Key

Experienced professionals know— *Control the moisture, control the mildew.* UltraBan-PRO was specifically engineered to control moisture absorption— while still allowing the surface to breathe. It's advanced *infusion film* chemistry bonds with the surface, creating an invisible barrier of protection against fungal/mildew growth.



UltraBan-PRO

Did You Know?

When blended with a liquid Borate, UltraBan-PRO enhances borate retention reducing the need for reapplication and assisting in wood boring insect prevention.

Proven Moisture Management

HomeWood Solutions is proud to provide the most effective products to enhance your crawlspace program. The Ultra System is easy to use, designed with the applicator in mind. Our crawlspace products contain no VOC's, and are designed to decrease harmful chemical exposure to the applicator in poorly ventilated areas.

Why Choose PRO ?

UltraBan-PRO stays where it's applied; enhancing product absorption. This allows for continued odor control and maximum protection. Real-time field results guarantee long-lasting protection against fungal/ mildew growth.

- Invisible film upon which fungus/mildew will not grow
- Easy, single coat application
- Can be applied to virtually any surface

For a Superior Clean, Get MEAN

UltraMean-2 is the perfect solution for a dirty crawlspace. It not only cleans the toughest jobs, it delivers superior results without the harsh chemicals.

- Interior/Exterior use
- Non-Chlorine Bleaching agent
- No perfumes or offensive odors
- Superior cleaning ensures optimal penetration of DOT- Borates



**Use UltraMean-2 to clean and deodorize the understructure before applying UltraBan-PRO.*

The products of choice for the #1 Pest Control company for moisture management!



Before: Contaminated crawlspace.



After: Treated and protected with UltraBan-PRO



Long-lasting protection you can trust!